

Slow Speed Shaft Direction	
Horizontal, slow speed shaft level	H
Vertical, slow speed shaft down	V
Vertical, slow speed shaft up	W
Universal mounting	N

Mounting style	
Foot	H
V flange	V
Flange	F

Type of Input	
Gearmotor	M
With adaptor	JM

Special Specifications	
Standard specification	blank
Special specification	S

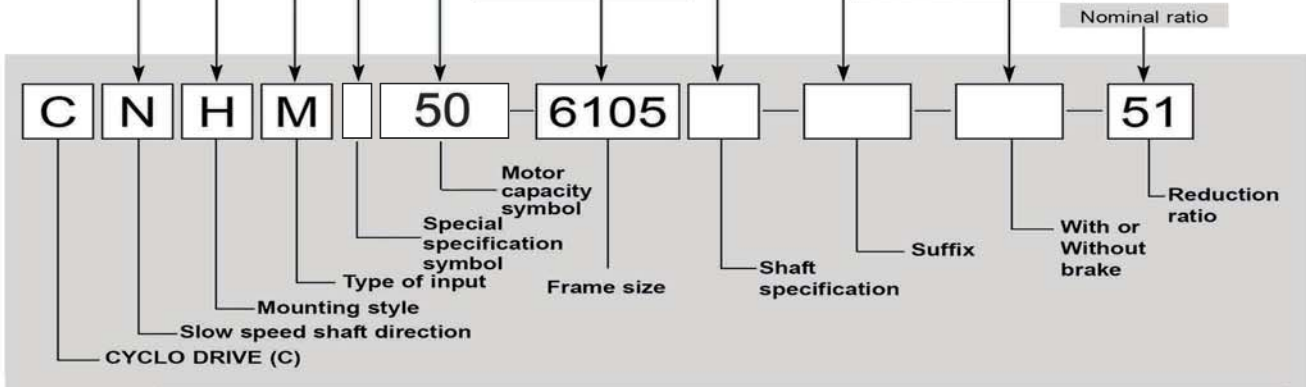
		Motor Capacity Symbol						
4P	Capacity symbol	01	02	03	05	08	1	
	kW (HP)	0.1 (1/8)	0.2 (1/4)	0.25 (1/3)	0.4 (1/2)	0.55 (3/4)	0.75 (1)	
	Capacity symbol	1H	2	3	4	5	8	
	kW (HP)	1.1 (1.5)	1.5 (2)	2.2 (3)	3.0 (4)	3.7 (5)	5.5 (7.5)	
	Capacity symbol	10	15	20	25	30	40	
	kW (HP)	7.5 (10)	11 (15)	15 (20)	18.5 (25)	22 (30)	30 (40)	
6P	Capacity symbol	50	60	75	100			
	kW (HP)	37 (50)	45 (60)	55 (75)	75 (100)			
	Capacity symbol	016	026	036	056	086	16	
	kW (HP)	0.1 (1/8)	0.2 (1/4)	0.25 (1/3)	0.4 (1/2)	0.55 (3/4)	0.75 (1)	
	Capacity symbol	1H6	26	36	46	56	86	
	kW (HP)	1.1 (1.5)	1.5 (2)	2.2 (3)	3.0 (4)	3.7 (5)	5.5 (7.5)	
6P	Capacity symbol	106	156	206	256	306	406	
	kW (HP)	7.5 (10)	11 (15)	15 (20)	18.5 (25)	22 (30)	30 (40)	
	Capacity symbol	506	606	756	1006	1256	1506	
	kW (HP)	37 (50)	45 (60)	55 (75)	75 (100)	90 (125)	110 (150)	
	Capacity symbol	1756						
	kW (HP)	132 (175)						

Shaft specification	
Metric JIS (Standard)	-
Inch size	Y
Metric DIN	G

Suffix		
Standard	-	Low Backlash
Light Heavy Radial	R1	With AF (inverter) motor
High Cap. Brg. Ductile Casing	R2	Servo Motor
Baseplate	BP	DC Motor
HH Type Ceiling	H1	High Efficiency Motor
Modification Left Wall	H2	Torque Limiter
Modification Right Wall	H3	

With or Without Brake	
Without brake	-
With brake	B

Frame size
(Refer to Selection
Tables starting from
page B-13.)

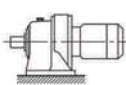


Product and Nomenclature Symbol Examples (Gearmotor)

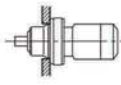
Standard and various application products of CYCLO GEARMOTOR are classified by their nomenclature symbol as below. Refer to specific catalogs or consult us for details on our application products.

CYCLO® GEARMOTORS

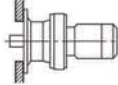
CHHM
(CNHM)



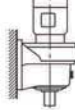
CHFM
(CNFM)



CHVM
(CNVM)



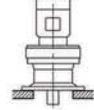
CVHM
(CNHM)



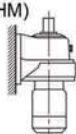
CVFM
(CNFM)



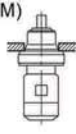
CVVM
(CNVM)



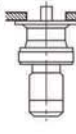
CWHM
(CNHM)



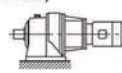
CWFM
(CNFM)



CWVM
(CNVM)

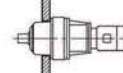


CHHJM
(CNHJM)



With Adaptor

CHFJM
(CNFJM)



With Adaptor

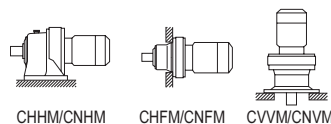
CVVJM
(CNVJM)



With Adaptor

GEARMOTORS
How to Select

Selection Tables Gearmotors #CNHM50, #CHHM50, #CNVM50, #CVVM50



37 kW	Hz		50Hz		60Hz	
	P		4	6	4	6
	n ₁	r/min	1450	980	1750	1165

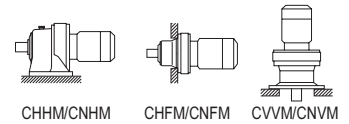
50Hz					60Hz					Nomenclature			Page of Dimension Sheet										
Output Speed n ₂ r/min	Output Torque Tout N-m kgf-m		Allowable Radial Load Pro N kgf		SF	Output Speed n ₂ r/min	Output Torque Tout N-m kgf-m		Allowable Radial Load Pro N kgf		SF	Input Capacity Symbol	Frame Size	Reduction Ratio	CNHM	CNFM	CNVM						
															CHHM	CHFM	CVVM						
132	2550	260	19000	1940	1.05	159	2110	215	18000	1830	1.05	50 -	6185	- 11	B-104	B-120	B-139						
			27000	2750	1.11				25400	2590	1.11	50 -	6190	- 11	B-104	B-120	B-139						
			27000	2750	1.30				25400	2590	1.30	50 -	6195	- 11	B-104	B-120	B-139						
			52000	5310	1.61				49300	5020	1.61	50 -	6205	- 11	B-105	B-121	B-140						
			52700	5380	2.04				49900	5090	2.04	50 -	6215	- 11	B-105	B-121	B-140						
112	3010	307	19700	2010	1.05	135	2490	254	18600	1900	1.05	50 -	6185	- 13	B-104	B-120	B-139						
			28000	2850	1.11				26400	2690	1.11	50 -	6190	- 13	B-104	B-120	B-139						
			28000	2850	1.30				26400	2690	1.30	50 -	6195	- 13	B-104	B-120	B-139						
			20600	2100	1.05				19500	1990	1.05	50 -	6185	- 15	B-104	B-120	B-139						
			29300	2990	1.11				27700	2820	1.11	50 -	6190	- 15	B-104	B-120	B-139						
96.7	3470	354	29300	2990	1.30	117	2880	293	27700	2820	1.30	50 -	6195	- 15	B-104	B-120	B-139						
			55900	5700	1.61				52900	5390	1.61	50 -	6205	- 15	B-105	B-121	B-140						
			56600	5770	2.04				53600	5470	2.04	50 -	6215	- 15	B-105	B-121	B-140						
			60400	6160	2.69				57200	5830	2.69	50 -	6225	- 15	B-106	B-122	B-141						
			21600	2210	1.03				20500	2090	1.05	50 -	6185	- 17	B-104	B-120	B-139						
85.3	3940	401	30900	3150	1.11	103	3260	332	29100	2970	1.11	50 -	6190	- 17	B-104	B-120	B-139						
			30900	3150	1.30				29100	2970	1.30	50 -	6195	- 17	B-104	B-120	B-139						
			23300	2370	1.03				22100	2250	1.05	50 -	6185	- 21	B-104	B-120	B-139						
			33200	3380	1.11				31300	3190	1.11	50 -	6190	- 21	B-104	B-120	B-139						
			33200	3380	1.30				31300	3190	1.30	50 -	6195	- 21	B-104	B-120	B-139						
69.0	4860	496	62500	6370	1.60	83.3	4030	411	59200	6030	1.60	50 -	6205	- 21	B-105	B-121	B-140						
			63800	6510	2.04				60500	6170	2.04	50 -	6215	- 21	B-105	B-121	B-140						
			67500	6880	2.55				63900	6510	2.55	50 -	6225	- 21	B-106	B-122	B-141						
			32900	3360	1.11				31300	3190	1.11	506 -	6190	- 15	B-104	B-120	B-139						
			32900	3360	1.30				31300	3190	1.30	506 -	6195	- 15	B-104	B-120	B-139						
65.3	5140	524	62600	6380	1.61	77.7	4320	441	59500	6070	1.61	506 -	6205	- 15	B-105	B-121	B-140						
			63400	6460	2.04				60300	6150	2.04	506 -	6215	- 15	B-105	B-121	B-140						
			23900	2440	0.81				22700	2320	0.81	50 -	6185	- 25	B-104	B-120	B-139						
			34600	3530	0.95				32700	3330	0.95	50 -	6190	- 25	B-104	B-120	B-139						
			34600	3530	1.09				32700	3330	1.09	50 -	6195	- 25	B-104	B-120	B-139						
50.0	6710	684	36200	3690	1.02	60.3	5560	567	34200	3490	1.02	50 -	6195	- 29	B-104	B-120	B-139						
			67900	6920	1.24				64400	6560	1.24	50 -	6205	- 29	B-105	B-121	B-140						
			69300	7060	1.58				65700	6700	1.58	50 -	6215	- 29	B-105	B-121	B-140						
			73400	7490	2.04				69600	7090	2.04	50 -	6225	- 29	B-106	B-122	B-141						
			37300	3800	1.11				35500	3610	1.30	506 -	6195	- 21	B-104	B-120	B-139						
46.7	7190	733	71400	7280	1.74	55.5	6050	617	68000	6930	2.04	506 -	6215	- 21	B-105	B-121	B-140						
			75500	7690	2.06				71800	7320	2.45	506 -	6225	- 21	B-106	B-122	B-141						
			41.4	8100	826				38000	3870	0.81	50.0	6710	684	35900	3660	0.81	50 -	6195	- 35	B-104	B-120	B-139
			77300	7880	1.27				73700	7510	1.51	506 -	6215	- 29	B-105	B-121	B-140						
			82000	8360	1.51				78100	7970	1.80	506 -	6225	- 29	B-106	B-122	B-141						
33.8	9930	1010	103000	10500	1.90	40.2	8360	852	97900	9980	2.04	506 -	6235	- 29	B-106	B-122	B-141						
			77700	7920	1.22				73800	7520	1.22	50 -	6215	- 43	B-105	B-121	B-140						
			82500	8410	1.53				78300	7980	1.53	50 -	6225	- 43	B-106	B-122	B-141						
			24.6	13700	1390				89200	9090	1.06	29.7	11300	1150	84700	8630	1.22	50 -	6225	- 59	B-106	B-122	B-141
			22.8	14700	1500				129000	13100	1.75	27.1	12400	1260	122000	12500	2.04	506 -	6245	- 43	B-107	B-123	B-142
16.6	20200	2060	140000	14200	1.28	19.7	17000	1730	133000	13500	1.52	506 -	6245	- 59	B-107	B-123	B-142						
			172000	17600	1.54				164000	16700	1.75	506 -	6255	- 59	B-107	B-123	B-142						
			211000	21500	2.28				201000	20500	2.55	506 -	6265	- 59	B-107	B-123	B-142						

- "*2" indicate models manufactured with reducer and motor separately mounted on a common baseplate (horizontal shaft direction) or on an adaptor (vertical shaft direction). Consult us for details, including dimensions.
- Allowable radial load (Pro) is the value at the midpoint of the slow speed shaft.
- "*3" indicate models with reduction ratios equal to nominal ratio. Refer to Table A-3 "6000SK Series (Actual Reduction Ratio)" on page A-4 for actual reduction ratio. Indicated reduction ratio is the same as actual reduction ratio for other models.
- Maintain torque load during operation within "Output torque" in the table for models with "*1" in the SF column. They cannot be operated with 100% motor rating.

Selection Tables Gearmotors #CNHM50, #CHHM50, #CNVM50, #CVVM50

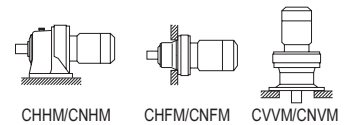
Selection Tables
37 kW, 45 kW
GEARMOTORS

37 kW	Hz		50Hz		60Hz	
	P		4	6	4	6
	n ₁	r/min	1450	980	1750	1165



50Hz						60Hz					Nomenclature			Page of Dimension Sheet			
Output Speed n ₂	Output Torque Tout		Allowable Radial Load Pro		SF	Output Speed n ₂	Output Torque Tout		Allowable Radial Load Pro		SF	Input Capacity Symbol	Frame Size	Reduction Ratio	CNHM	CNFM	CNVM
r/min	N·m	kgf·m	N	kgf		r/min	N·m	kgf·m	N	kgf					CHHM	CHFM	CVVM
12.0	18700	1910	141000	14300	*1	14.5	18700	1910	133000	13500	*1	50 -	6235DB	- 121	B-114	B-131	B-150
	20500	2090	156000	15900	*1		20500	2090	148000	15000	*1	50 -	6245DB	- 121	B-114	B-131	B-150
	26500	2710	191000	19500	1.04		22000	2240	181000	18500	1.25	50 -	6255DB	- 121	B-115	B-132	B-151
11.3	29800	3040	192000	19600	1.04	13.4	25100	2560	183000	18700	1.16	506 -	6255	- 87	B-107	B-123	B-142
			236000	24000	1.44					224000	22900	1.44	506 -	6265	- 87	B-107	B-123
8.79	26200	2680	168000	17100	*1	10.6	26200	2680	158000	16100	*1	50 -	6245DB	- 165	B-114	B-131	B-150
	36200	3690	205000	20900	0.86		30000	3060	194000	19800	1.04	50 -	6255DB	- 165	B-115	B-132	B-151
7.44	31200	3180	216000	22100	*1	8.97	31200	3180	204000	20800	*1	50 -	6255DB	- 195	B-115	B-132	B-151
	42800	4360	263000	26800	1.02		35400	3610	250000	25400	1.23	50 -	6265DA	- 195	B-115	B-132	B-151
6.28	50700	5160	276000	28100	0.91	7.58	42000	4280	266000	27100	1.10	50 -	6265DA	- 231	B-115	B-132	B-151
5.31	46000	4690	276000	28100	*1	6.41	46000	4690	276000	28100	*1	50 -	6265DA	- 273	B-115	B-132	B-151
4.55	70000	7130	248000	25300	0.97	5.49	58000	5910	248000	25300	1.18	50 -	6275DA	- 319	B-115	-	B-151
	68200	6950	248000	25300	*1		68200	6950	248000	25300	*1	50 -	6275DA	- 377	B-115	-	B-151
3.85	82700	8430	248000	25300	0.82	4.64	68500	6980	248000	25300	1.00	50 -	6275DA	- 377	B-115	-	B-151

45 kW	Hz		50Hz		60Hz	
	P		4	6	4	6
	n ₁	r/min	1450	980	1750	1165



50Hz						60Hz					Nomenclature			Page of Dimension Sheet			
Output Speed n ₂	Output Torque Tout		Alloeaable Radial Load Pro		SF	Output Speed n ₂	Output Torque Tout		Alloeaable Radial Load Pro		SF	Input Capacity Symbol	Frame Size	Reduction Ratio	CNHM	CNFM	CNVM
r/min	N·m	kgf·m	N	kgf		r/min	N·m	kgf·m	N	kgf					CHHM	CHFM	CVVM
132	3100	316	26800	2730	1.07	159	2570	262	25300	2570	1.07	60 -	6195	- 11	B-104	B-120	B-139
			51900	5290	1.33				49200	5010	1.33	60 -	6205	- 11	B-105	B-121	B-140
			52600	5360	1.67				49800	5080	1.67	60 -	6215	- 11	B-105	B-121	B-140
112	3660	373	27700	2830	1.07	135	3030	309	26200	2670	1.07	60 -	6195	- 13	B-104	B-120	B-139
			55700	5680	1.33				52800	5380	1.33	60 -	6205	- 15	B-105	B-121	B-140
			56500	5750	1.67				53500	5450	1.67	60 -	6215	- 15	B-105	B-121	B-140
96.7	4220	431	29000	2960	1.07	117	3500	357	27400	2800	1.07	60 -	6195	- 15	B-104	B-120	B-139
			55700	5680	1.33				52800	5380	1.33	60 -	6205	- 15	B-105	B-121	B-140
			60200	6140	2.21				57000	5820	2.21	60 -	6225	- 15	B-106	B-122	B-141
85.3	4790	488	21200	2160	0.85	103	3970	404	20200	2060	0.87	60 -	6185	- 17	B-104	B-120	B-139
			30600	3120	1.07				28900	2950	1.07	60 -	6195	- 17	B-104	B-120	B-139
			22800	2330	0.85				21700	2210	0.87	60 -	6185	- 21	B-104	B-120	B-139
69.0	5910	603	32900	3350	0.91	83.3	4900	499	31100	3170	0.91	60 -	6190	- 21	B-104	B-120	B-139
			32900	3350	1.07				31100	3170	1.07	60 -	6195	- 21	B-104	B-120	B-139
			62200	6340	1.32				59000	6010	1.32	60 -	6205	- 21	B-105	B-121	B-140
			63600	6480	1.67				60300	6140	1.67	60 -	6215	- 21	B-105	B-121	B-140
			67200	6850	2.09				63700	6490	2.09	60 -	6225	- 21	B-106	B-122	B-141
65.3	6250	637	62300	6350	1.33	77.7	5260	536	59300	6050	1.33	606 -	6205	- 15	B-105	B-121	B-140
			63100	6430	1.67				60100	6130	1.67	606 -	6215	- 15	B-105	B-121	B-140
			67400	6870	2.21				64200	6540	2.21	606 -	6225	- 15	B-106	B-122	B-141
58.0	7040	718	34200	3490	0.90	70.0	5830	595	32400	3300	0.90	60 -	6195	- 25	B-104	B-120	B-139
50.0	8170	832	35700	3640	0.84	60.3	6770	690	33900	3450	0.84	60 -	6195	- 29	B-104	B-120	B-139
			67600	6890	1.02				64100	6530	1.02	60 -	6205	- 29	B-105	B-121	B-140
			68900	7030	1.30				65400	6660	1.30	60 -	6215	- 29	B-105	B-121	B-140
			73100	7450	1.67				69300	7070	1.67	60 -	6225	- 29	B-106	B-122	B-141

1. Combinations in **bold** are the recommended models for operations for 10 hours/day with uniform load (service factor is about 1.0 for motor rating at 50Hz).
2. Motor slippage may affect n₁ and n₂. Refer to technical data for details.
3. CNHM, CHHM, CNFM, CHFM, CNVM, and CVVM indicate types. Refer to page B-10 for details.
4. Lubrication method is different for each model. Refer to "Lubrication" section in page F-4~F-5 for details.
5. "6" at the end of "input capacity symbol" indicates models with 6P motor. Other models come with 4P motor.